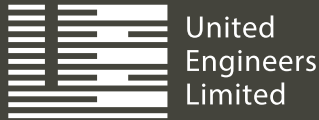


DAIRY  
FARM  
RESIDENCES



DEVELOPER: UE DAIRY FARM PTE LTD | HOUSING DEVELOPER LICENCE NO.: C1347 | LOT NO.: LOT(S) 02788P, MK 16, AT DAIRY FARM ROAD | TENURE: 99 YEARS FROM 5 DECEMBER 2018 | EXPECTED DATE OF VACANT POSSESSION: 29 FEBRUARY 2024 | EXPECTED DATE OF LEGAL COMPLETION: 28 FEBRUARY 2027 | COMPANY REGISTRATION NO.: 201803321C | BUILDING PLAN APPROVAL NO: A1249-00002-2018-BP01 | BUILDING PLAN APPROVAL DATE: 10 OCTOBER 2019

DISCLAIMER: WHILE EVERY REASONABLE CARE HAS BEEN TAKEN TO ENSURE ACCURACY IN THE ADVERTISING COLLATERAL AND SALES GALLERY/SHOWFLAT MODEL (THE "MATERIALS"), THE DEVELOPER AND ITS AGENTS SHALL NOT BE HELD RESPONSIBLE FOR ANY INACCURACY OR OMISSION IN THEIR CONTENTS OR VARIATION BETWEEN THE MATERIALS AND THE ACTUAL UNIT. ALL STATEMENTS, LITERATURE AND DEPICTIONS IN THE MATERIALS ARE NOT TO BE REGARDED AS STATEMENTS OR REPRESENTATIONS OF FACT. VISUAL REPRESENTATIONS SUCH AS LAYOUT PLANS, FINISHES, ILLUSTRATIONS, PICTURES, PHOTOGRAPHS AND DRAWINGS CONTAINED IN THE MATERIALS ARE ARTIST'S IMPRESSIONS ONLY AND NOT REPRESENTATIONS OF FACT. SUCH MATERIALS ARE FOR GENERAL GUIDANCE ONLY AND SHOULD NOT BE RELIED UPON AS ACCURATELY DESCRIBING ANY SPECIFIC MATTER. ALL INFORMATION, SPECIFICATIONS, PLANS AND VISUAL REPRESENTATIONS CONTAINED IN THE MATERIALS ARE SUBJECT TO CHANGES FROM TIME TO TIME BY THE DEVELOPER AND/OR THE COMPETENT AUTHORITIES AND SHALL NOT FORM PART OF THE OFFER OR CONTRACT. ALL AREAS ARE APPROXIMATE MEASUREMENTS AND SUBJECT TO FINAL SURVEYS. THE SALES AND PURCHASE AGREEMENT SHALL FORM THE ENTIRE AGREEMENT BETWEEN THE DEVELOPER AND THE PURCHASER AND SHALL IN NO WAY BE MODIFIED BY ANY STATEMENTS, REPRESENTATIONS OR PROMISES MADE (WHETHER OR NOT CONTAINED IN THE MATERIALS AND/OR MADE BY THE DEVELOPER OR AGENT). NO PART OF THE MATERIALS SHALL CONSTITUTE A REPRESENTATION OR WARRANTY.

NATURE • RETAIL • HOME





UNWIND IN  
A WORLD OF YOUR OWN  
WITHIN THE ADDRESS





DELIGHT IN  
A WORLD OF MODERN CONVENIENCES  
AT YOUR DOORSTEP





RELAX IN  
A WORLD OF THOUGHTFUL FEATURES  
WITHIN YOUR HOME



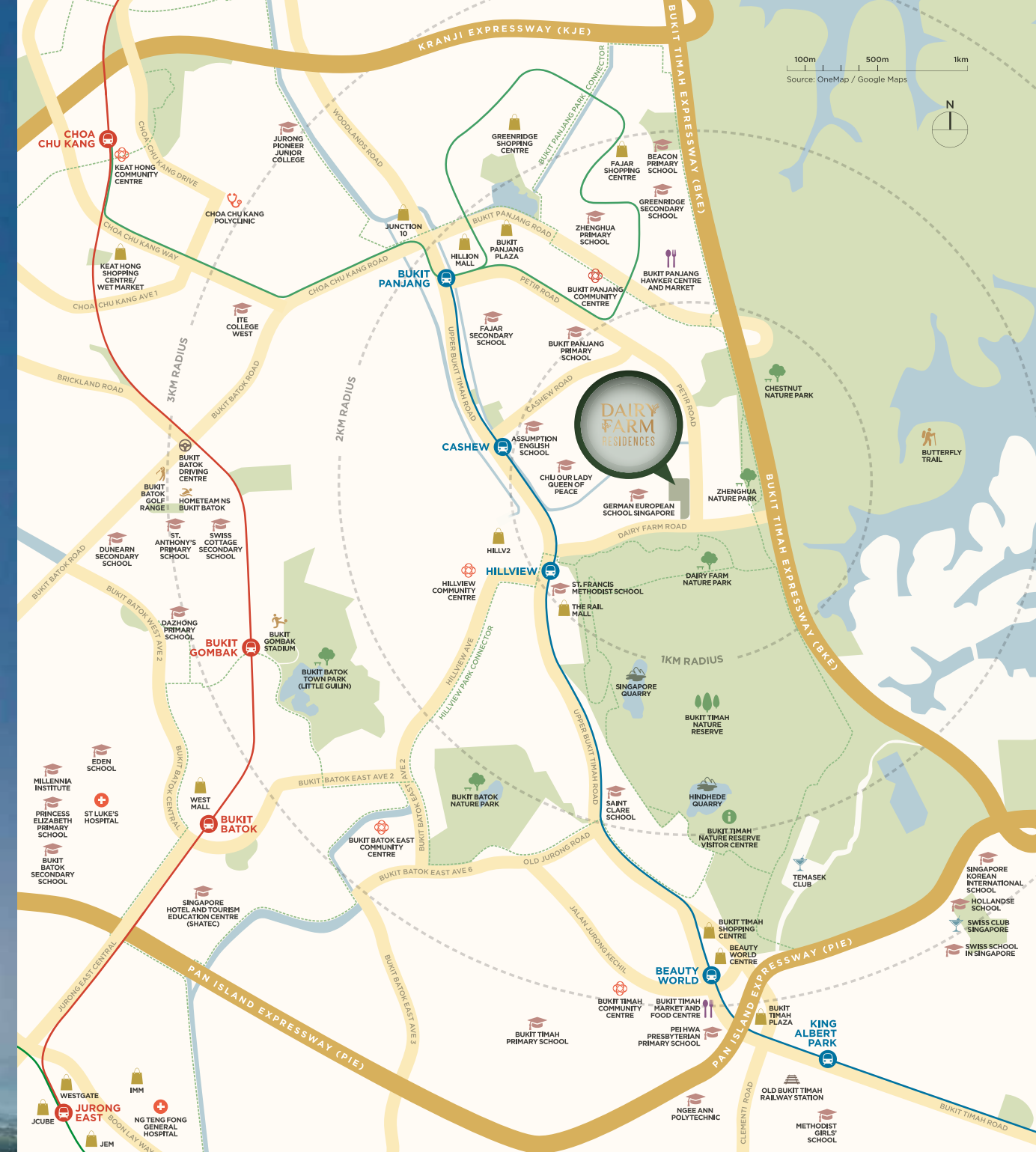
# One home. Many worlds of enjoyment.

## DAIRY FARM RESIDENCES

The first integrated development in the Dairy Farm vicinity, Dairy Farm Residences brings all of life's conveniences and the idyllic vibes of resort living to your doorstep.

Located at the junction of Petir Road and Dairy Farm Road, Dairy Farm Residences is highly accessible via Bukit Timah Expressway (BKE) and the MRT Downtown Line 2, and in close proximity to prestigious schools and lifestyle amenities.

Within the woods-inspired estate, 90% of the 460 residential units are north-south facing with many units offering unblocked scenic views of Singapore's lushest nature parks.



### ENJOY EASY ACCESSIBILITY TO A WIDE RANGE OF AMENITIES WITHIN MINUTES

#### SCHOOLS

German European School Singapore  
CHIJ Our Lady Queen of Peace  
Assumption English School  
Bukit Panjang Primary School  
Zhenghua Primary School  
Greenridge Secondary School

#### LIFESTYLE

The Rail Mall  
HillV2  
Hillion Mall  
Bukit Timah Shopping Centre  
Beauty World Centre  
Bukit Panjang Hawker Centre and Market

#### NATURE

Zhenghua Nature Park  
Dairy Farm Nature Park  
Chestnut Nature Park  
Hillview Park Connector  
Bukit Timah Nature Reserve  
Butterfly Trail  
Bukit Panjang Park Connector

#### TRANSPORT

Hillview MRT (DT3)  
Cashew MRT (DT2)  
Bukit Timah Expressway (BKE)  
Upper Bukit Timah Road

**Free Shuttle Bus Service\***  
→ Dairy Farm Residences

Hillview MRT ← Bukit Panjang MRT

\* 1st year only



## A paradise for nature lovers



Bukit Timah Nature Reserve

## An integrated development made for the good life



The Rail Corridor



Zhenghua Nature Park



Wallace Education Centre



Western Adventure Park Connector



Dairy Farm Residences is surrounded by the most number of nature parks and the biggest nature reserves in Singapore.

Start the day with a leisurely stroll at Dairy Farm Nature Park, work up a sweat on your evening jog around Zhenghua Nature Park, or go hiking around the Bukit Timah Hill on the weekend. For a little 'Western Adventure', cycle along a 23km park connector that takes you through eight parks in the northwestern part of Singapore.



Indulge in a good meal at the restaurants, pick up the freshest produce at the gourmet supermarket, and leave your little ones in the good hands of the childcare professionals – all without leaving the vicinity of your home.

Dairy Farm Residences comes integrated with a two-level retail podium spanning the basement and ground level, with a dedicated pick-up/drop-off area, and a separate carpark for the shoppers from neighbouring estates.

Discover a wide array of food and lifestyle offerings to take care of everything, from your everyday needs to the occasional indulgences.



ARTIST'S IMPRESSION

Retail Podium and Community Space



Specialty Food Hall



Childcare Centre





# A private resort nestled in the woods

ARTIST'S IMPRESSION

Air-conditioned Clubhouse

## A fusion of modern design and rustic nature



FOR ILLUSTRATION ONLY



ARTIST'S IMPRESSION

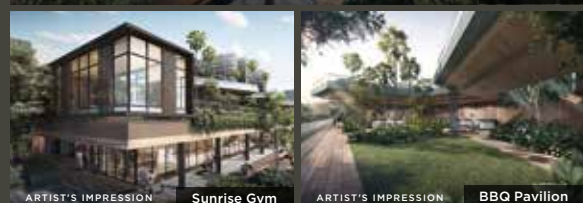
Valley Pool



A creative ensemble of timber fixtures is woven seamlessly into the nature landscaping, carving out a shady trail that leads to a private resort-style facilities area away from the residential blocks.

Enjoy undisturbed moments working out at the Sunrise Gym overlooking the nearby nature parks, take a dip in the Valley Pool, or relax in the cabanas.

Around the estate, you will also find fitness and wellness facilities at every turn, including a jogging trail, an outdoor fitness area and yoga deck.



ARTIST'S IMPRESSION

Sunrise Gym

ARTIST'S IMPRESSION

BBQ Pavilion



Dairy Farm Residences is innovatively designed to invite nature right into your home through the open balconies and full height windows.

Residents on the upper floors will enjoy spectacular views of the Bukit Timah Nature Reserve to the west, as well as the Central Catchment Nature Reserve and Upper Peirce Reservoir to the east.

Every unit comes with space-saving features and branded appliances that are built seamlessly into a contemporary design. The clean lines and touches of wood materials against earthy tones imbue a sense of spaciousness in the house, providing the perfect canvas for expressing your individuality.

### Smart Homes for Better Living

Access your home features using your phone, from wherever you are.



#### IN-BUILT FEATURES



DIGITAL  
LOCKSET



SMOKE  
DETECTOR



SMART  
AIRCON  
CONTROL



GRANTING  
VISITOR  
ACCESS

#### CUSTOMISATION SUGGESTIONS\*



IP  
SURVEILLANCE  
CAMERA



SMART  
LIGHTING  
CONTROL



MOTORISED  
BLINDS AND  
CURTAINS SYSTEM



SMART  
PLUG

\*These optional smart features can be installed by a third-party vendor at additional cost. All negotiations and service arrangements are to be made directly with the third-party vendor.



# Site Plan



## L1 • THE WOODS

- 1 DROP OFF
- 2 ATRIUM LOBBY
- 3 POOL DECK
- 4 FOREST TRAIL
- 5 50M LAP POOL
- 6 FOREST CABANA
- 7 SUNDECK
- 8 WATER COURT
- 9 WOODS PLAY
- 10 HILL PLAY
- 11 HERB GARDEN
- 12 PARTY LAWN
- 13 THE BANQUET
- 14 LAWN DECK
- 15 JOGGING TRAIL
- 16 OUTDOOR FITNESS
- 17 THE GRILL HOUSE
- 18 FEATURE TREE
- 19 GRAND ATRIUM

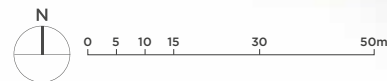
## L2 • THE CANOPY

- 20 BBQ DECK I
- 21 BBQ DECK II
- 22 HAMMOCK DECK
- 23 YOGA DECK
- 24 MIST GARDEN
- 25 SUNKEN LOUNGE
- 26 HAMMOCK GARDEN
- 27 STREAM WALK
- 28 FERN GARDEN
- 29 SUNRISE GYM
- 30 FOOT REFLEXOLOGY WALK
- 31 TENNIS COURT

## L3 • THE OASIS

- 32 HILLTOP BAR
- 33 UPPER FUNCTION ROOM
- 34 JUMPING JET
- 35 KIDS' POOL
- 36 AQUA GYM
- 37 WATER BED LOUNGE
- 38 VALLEY POOL DECK
- 39 WATER DECK
- 40 WATER FOUNTAIN POOL
- 41 PARTY POOL
- 42 PARTY DECK
- 43 BOUTIQUE SPA
- 44 VALLEY POOL
- 45 LIFESTYLE POOL
- 46 WATER LOUNGE
- 47 HILLTOP DINING

- A VEHICLE ENTRY/EXIT
- B GUARD POST
- C RESIDENTS' SIDE GATE 1
- D RESIDENTS' SIDE GATE 2
- E RESIDENTS' SIDE GATE 3 (B1)
- F SUBSTATION (B1)
- G TRANSFORMER ROOM (B1)
- H BIN CENTRE (B1)
- I GENERATOR (L2)
- J WATER TANK (L6)
- K WATER TANK (L15)



BP Number: A1249-00002-2018-BP01 approved on 10 Oct 2019

# Schematic Diagram

## BLOCK 6 DAIRY FARM LANE

FLOOR	UNIT	01	02	03	04	05	06	07	08	09	10	11	12	13
15	2B2a	3C1	3B1	2B1	3A1	3A1	2B1	3B1	3C1	2B2				
14	2B2a	3C1	3B1	2B1	3A1	3A1	2B1	3B1	3C1	2B2	2C1	2B2	2B2	
13	2B2a	3C1	3B1	2B1	3A1	3A1	2B1	3B1	3C1	2B2	2C1	2B2	2B2	
12	2B2a	3C1	3B1	2B1	3A1	3A1	2B1	3B1	3C1	2B2	2C1	2B2	2B2	
11	2B2a	3C1	3B1	2B1	3A1	3A1	2B1	3B1	3C1	2B2	2C1	2B2	2B2	
10	2B2a	3C1	3B1	2B1	3A1	3A1	2B1	3B1	3C1	2B2	2C1	2B2	2B2	
9	2B2a	3C1	3B1	2B1	3A1	3A1	2B1	3B1	3C1	2B2	2C1	2B2	2B2	
8	2B2a	3C1	3B1	2B1	3A1	3A1	2B1	3B1	3C1	2B2	2C1	2B2	2B2	
7	2B2a	3C1	3B1	2B1	3A1	3A1	2B1	3B1	3C1	2B2	2C1	2B2	2B2	
6	2B2a	3C1	3B1	2B1	3A1	3A1	2B1	3B1	3C1	2B2	2C1	2B2	2B2	
5	2B2a	3C1	3B1	2B1	3A1	3A1	2B1	3B1	3C1	2B2	2C1	2B2	2B2	
4	2B2a	3C1	3B1	2B1	3A1	3A1	2B1	3B1	3C1	2B2	2C1	2B2	2B2	
3	2B2a	3C1	3B1	2B1	3A1	3A1	2B1	3B1	3C1	2B2	2C1	2B2	2B2	
2	2B2a	3C1	3B1	2B1	3A1	3A1	2B1	3B1	3C1	2B2	2C1		2B2	
1	2B2a-G	3C1-G	3B1-G	2B1-G	3A1-G	3A1-G	2B1-G	3B1-G	3C1-G	2B2-G	2C1-G		2B2-G	

## BLOCK 8 DAIRY FARM LANE

FLOOR	UNIT	14	15	16	17	18	19	20	21	22	23	24	25	26
15	2B2	3C1	3B1	2B1	3A1	3A1	2B1	3B1	4A1	2B2a				
14	2B2	3C1	3B1	2B1	3A1	3A1	2B1	3B1	4A1	2B2a	2C1	2B2	2C1	
13	2B2	3C1	3B1	2B1	3A1	3A1	2B1	3B1	4A1	2B2a	2C1	2B2	2C1	
12	2B2	3C1	3B1	2B1	3A1	3A1	2B1	3B1	4A1	2B2a	2C1	2B2	2C1	
11	2B2	3C1	3B1	2B1	3A1	3A1	2B1	3B1	4A1	2B2a	2C1	2B2	2C1	
10	2B2	3C1	3B1	2B1	3A1	3A1	2B1	3B1	4A1	2B2a	2C1	2B2	2C1	
9	2B2	3C1	3B1	2B1	3A1	3A1	2B1	3B1	4A1	2B2a	2C1	2B2	2C1	
8	2B2	3C1	3B1	2B1	3A1	3A1	2B1	3B1	4A1	2B2a	2C1	2B2	2C1	
7	2B2	3C1	3B1	2B1	3A1	3A1	2B1	3B1	4A1	2B2a	2C1	2B2	2C1	
6	2B2	3C1	3B1	2B1	3A1	3A1	2B1	3B1	4A1	2B2a	2C1	2B2	2C1	
5	2B2	3C1	3B1	2B1	3A1	3A1	2B1	3B1	4A1	2B2a	2C1	2B2	2C1	
4	2B2	3C1	3B1	2B1	3A1	3A1	2B1	3B1	4A1	2B2a	2C1	2B2	2C1	
3	2B2	3C1	3B1	2B1	3A1	3A1	2B1	3B1	4A1	2B2a	2C1	2B2	2C1	
2	2B2	3C1	3B1	2B1	3A1	3A1	2B1	3B1	4A1	2B2a	2C1		2C1	
1	2B2-G	3C1-G	3B1-G	2B1-G	3A1-G	3A1-G	2B1-G	3B1-G	4A1-G	2B2a-G	2C1-G		2C1-G	

## BLOCK 10 DAIRY FARM LANE

FLOOR	UNIT	27	28	29	30	31	32	33	34
5	2A1a	3B1a	3B1a	2A1	2A1	3A2	3A2	2A2	
4	2A1a	3B1a	3B1a	2A1	2A1	3A2	3A2	2A2	
3	2A1a	3B1a	3B1a	2A1	2A1	3A2	3A2	2A2	
2	2A1a	3B1a	3B1a	2A1	2A1	3A2	3A2	2A2	
1	2A1a-G	3B1a-G	3B1a-G	2A1-G2	2A1-G2	3A2-G	3A2-G	2A2-G	

## BLOCK 12 DAIRY FARM LANE

FLOOR	UNIT	35	36	37	38	39	40	41	42
5	2A1	4A1a	3A3	2A1	2A1	3A3	3B2	2A2	
4	2A1	4A1a	3A3	2A1	2A1	3A3	3B2	2A2	
3	2A1	4A1a	3A3	2A1	2A1	3A3	3B2	2A2	
2	2A1	4A1a	3A3	2A1	2A1	3A3	3B2	2A2	
1	2A1-G2	4A1a-G	3A3-G	2A1-G1	2A1-G1	3A3-G	3B2-G	2A2-G	

## LEGEND

- 2-BEDROOM TYPE A
- 2-BEDROOM TYPE B
- 2-BEDROOM TYPE C
- 3-BEDROOM TYPE A
- 3-BEDROOM TYPE B
- 3-BEDROOM TYPE C
- 4-BEDROOM TYPE A



## 2-BEDROOM

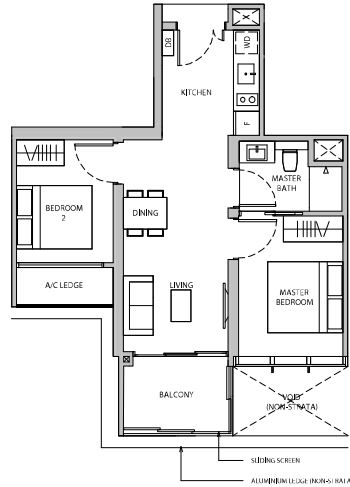
## 2-BEDROOM

### TYPE 2A1

58 sq m / 624 sq ft

BLK 10  
#02-30 to #05-30

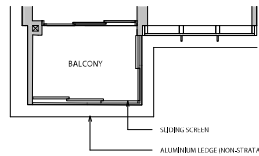
BLK 12  
#02-35\* to #05-35\*  
#02-38 to #05-38  
#02-39\* to #05-39\*



### TYPE 2A1

58 sq m / 624 sq ft

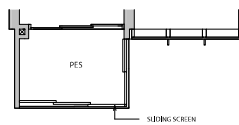
BLK 10  
#02-31\* to #05-31\*



### TYPE 2A1-G1

58 sq m / 624 sq ft

BLK 12  
#01-38  
#01-39\*

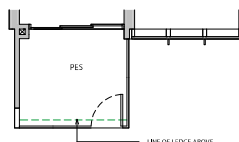


### TYPE 2A1-G2

60 sq m / 646 sq ft

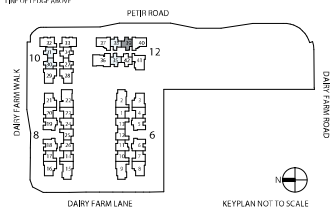
BLK 10  
#01-30  
#01-31\*

BLK 12  
#01-35\*



\*HORIZONTAL UNITS  
DB DISTRIBUTION BOARD WD WASHER CUM DRYER WAD WASHER AND DRYER F FREEZER DW DISHWASHER  
WC WATER CLOSET

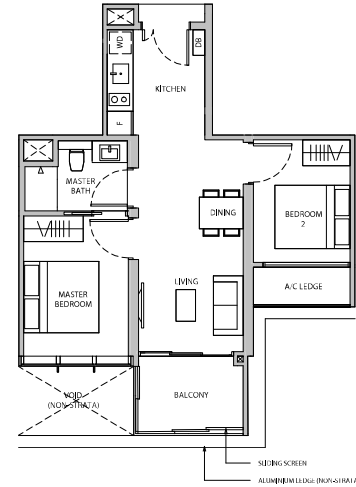
AREA INCLUDES A/V C LEDGE, BALCONY, PRIVATE ENCLOSED SPACE (PES) AND VOID WHERE APPLICABLE. PLEASE REFER TO THE KEYPLAN FOR ORIENTATION. THE PLANS ARE SUBJECT TO CHANGE AS MAY BE APPROVED BY RELEVANT AUTHORITIES. ALL FLOOR PLANS ARE APPROXIMATE MEASUREMENTS ONLY AND ARE SUBJECT TO GOVERNMENT RE-SURVEY. THE BALCONY SHALL NOT BE ENCLOSED UNLESS WITH THE APPROVED BALCONY SCREEN.



### TYPE 2A1a

58 sq m / 624 sq ft

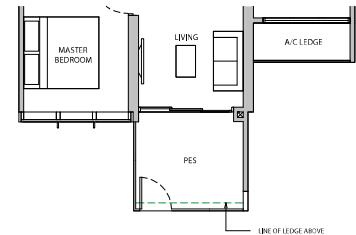
BLK 10  
#02-27 to #05-27



### TYPE 2A1a-G

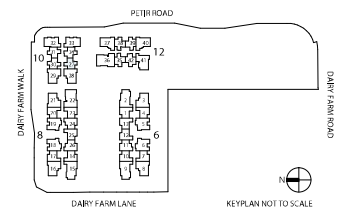
59 sq m / 635 sq ft

BLK 10  
#01-27



\*HORIZONTAL UNITS  
DB DISTRIBUTION BOARD WD WASHER CUM DRYER WAD WASHER AND DRYER F FREEZER DW DISHWASHER  
WC WATER CLOSET

AREA INCLUDES A/V C LEDGE, BALCONY, PRIVATE ENCLOSED SPACE (PES) AND VOID WHERE APPLICABLE. PLEASE REFER TO THE KEYPLAN FOR ORIENTATION. THE PLANS ARE SUBJECT TO CHANGE AS MAY BE APPROVED BY RELEVANT AUTHORITIES. ALL FLOOR PLANS ARE APPROXIMATE MEASUREMENTS ONLY AND ARE SUBJECT TO GOVERNMENT RE-SURVEY. THE BALCONY SHALL NOT BE ENCLOSED UNLESS WITH THE APPROVED BALCONY SCREEN.





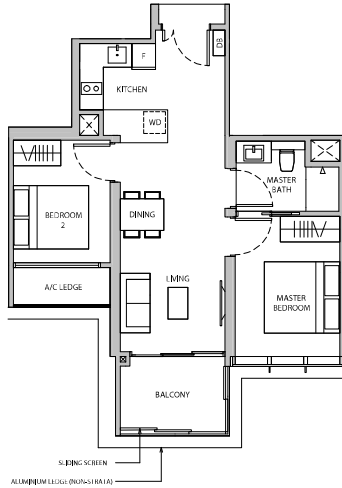
## 2-BEDROOM

## 2-BEDROOM

### TYPE 2A2 60 sq m / 646 sq ft

**BLK 10**  
#02-34 to #05-34

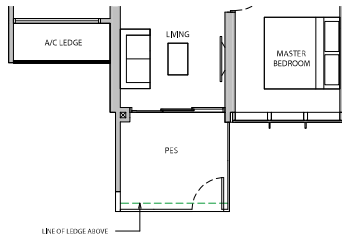
**BLK 12**  
#02-42 to #05-42



### TYPE 2A2-G 61 sq m / 657 sq ft

**BLK 10**  
#01-34

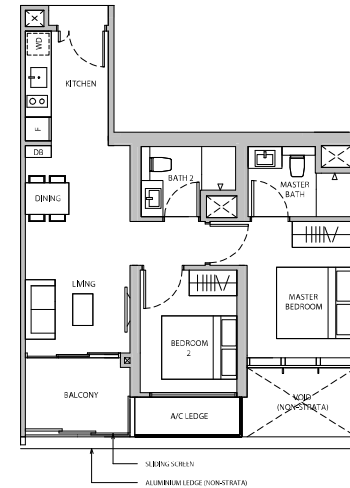
**BLK 12**  
#01-42



### TYPE 2B1 66 sq m / 710 sq ft

**BLK 6**  
#02-04\* to #15-04\*  
#02-07 to #15-07

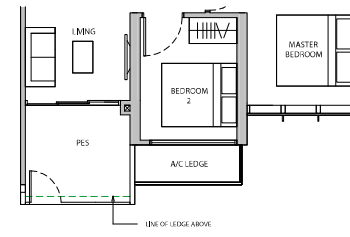
**BLK 8**  
#02-17\* to #15-17\*  
#02-20 to #15-20



### TYPE 2B1-G 67 sq m / 721 sq ft

**BLK 6**  
#01-04\*  
#01-07

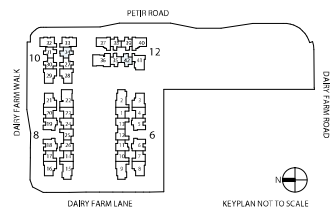
**BLK 8**  
#01-17\*  
#01-20



\*HORIZONTAL UNITS

DB DISTRIBUTION BOARD WD WASHER DUM DRYER WAD WASHER AND DRYER F FRIDGE DW DISHWASHER  
WC WATER CLOSET

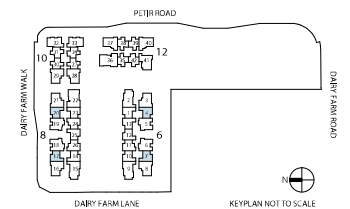
AREA INCLUDES A/C LEDGE, BALCONY, PRIVATE ENCLOSED SPACE (PES) AND VOID WHERE APPLICABLE. PLEASE REFER TO THE KEYPLAN FOR ORIENTATION. THE PLANS ARE SUBJECT TO CHANGE AS MAY BE APPROVED BY RELEVANT AUTHORITIES. ALL FLOOR PLANS ARE APPROXIMATE MEASUREMENTS ONLY AND ARE SUBJECT TO GOVERNMENT RESURVEY. THE BALCONY SHALL NOT BE ENCLOSED UNLESS WITH THE APPROVED BALCONY SCREEN.



\*HORIZONTAL UNITS

DB DISTRIBUTION BOARD WD WASHER DUM DRYER WAD WASHER AND DRYER F FRIDGE DW DISHWASHER  
WC WATER CLOSET

AREA INCLUDES A/C LEDGE, BALCONY, PRIVATE ENCLOSED SPACE (PES) AND VOID WHERE APPLICABLE. PLEASE REFER TO THE KEYPLAN FOR ORIENTATION. THE PLANS ARE SUBJECT TO CHANGE AS MAY BE APPROVED BY RELEVANT AUTHORITIES. ALL FLOOR PLANS ARE APPROXIMATE MEASUREMENTS ONLY AND ARE SUBJECT TO GOVERNMENT RESURVEY. THE BALCONY SHALL NOT BE ENCLOSED UNLESS WITH THE APPROVED BALCONY SCREEN.





## 2-BEDROOM

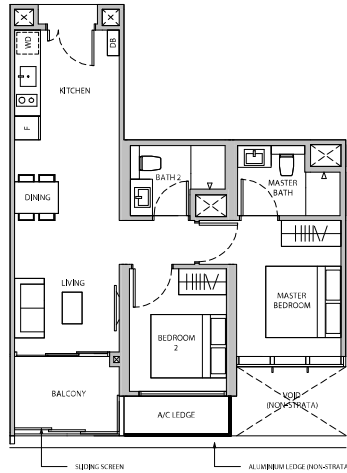
## 2-BEDROOM

### TYPE 2B2

66 sq m / 710 sq ft

**BLK 6**  
#02-10\* to #15-10\*

**BLK 8**  
#02-14 to #15-14

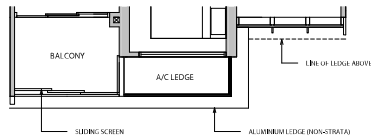


### TYPE 2B2

66 sq m / 710 sq ft

**BLK 6**  
#04-12\*  
#06-12\*  
#08-12\*  
#10-12\*  
#12-12\*  
#14-12\*

**BLK 8**  
#04-25\*  
#06-25\*  
#08-25\*  
#10-25\*  
#12-25\*  
#14-25\*

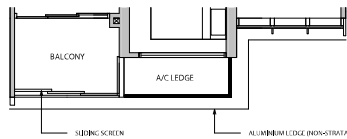


### TYPE 2B2

66 sq m / 710 sq ft

**BLK 6**  
#03-12\*  
#05-12\*  
#07-12\*  
#09-12\*  
#11-12\*  
#13-12\*

**BLK 8**  
#03-25\*  
#05-25\*  
#07-25\*  
#09-25\*  
#11-25\*  
#13-25\*

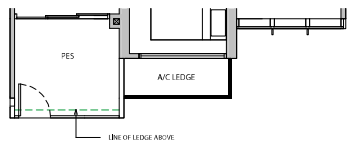


### TYPE 2B2-G

67 sq m / 721 sq ft

**BLK 6**  
#01-10\*  
#01-13

**BLK 8**  
#01-14

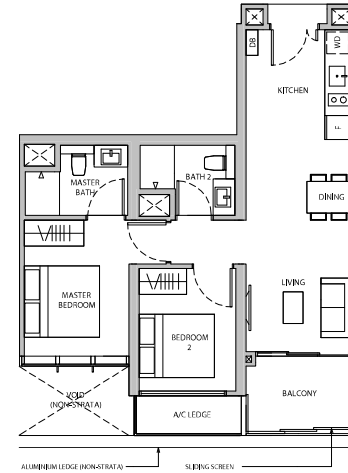


### TYPE 2B2a

67 sq m / 721 sq ft

**BLK 6**  
#02-01\* to #15-01\*

**BLK 8**  
#02-23 to #15-23

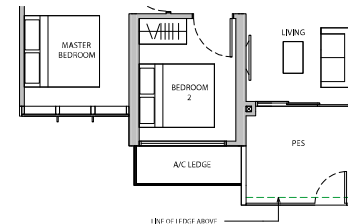


### TYPE 2B2a-G

68 sq m / 732 sq ft

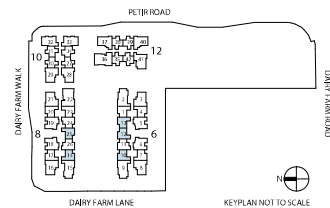
**BLK 6**  
#01-01\*

**BLK 8**  
#01-23



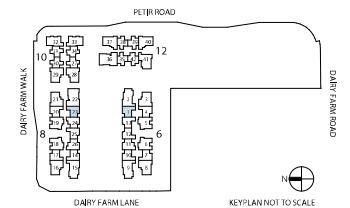
\*TERRACE UNITS  
DB DISTRIBUTION BOARD WD WASHER CUM DRYER W&D WASHER AND DRYER F FRIDGE DW DISHWASHER  
WC WATER CLOSET

AREA INCLUDES A/C LEDGE, BALCONY, PRIVATE ENCLOSED SPACE (PES) AND VOID WHERE APPLICABLE. PLEASE REFER TO THE KEYPLAN FOR ORIENTATION. THE PLANS ARE SUBJECT TO CHANGE AS MAY BE APPROVED BY RELEVANT AUTHORITIES. ALL FLOOR PLANS ARE APPROXIMATE MEASUREMENTS ONLY AND ARE SUBJECT TO GOVERNMENT RE-SURVEY. THE BALCONY SHALL NOT BE ENCLOSED UNLESS WITH THE APPROVED BALCONY SCREEN.



\*TERRACE UNITS  
DB DISTRIBUTION BOARD WD WASHER CUM DRYER W&D WASHER AND DRYER F FRIDGE DW DISHWASHER  
WC WATER CLOSET

AREA INCLUDES A/C LEDGE, BALCONY, PRIVATE ENCLOSED SPACE (PES) AND VOID WHERE APPLICABLE. PLEASE REFER TO THE KEYPLAN FOR ORIENTATION. THE PLANS ARE SUBJECT TO CHANGE AS MAY BE APPROVED BY RELEVANT AUTHORITIES. ALL FLOOR PLANS ARE APPROXIMATE MEASUREMENTS ONLY AND ARE SUBJECT TO GOVERNMENT RE-SURVEY. THE BALCONY SHALL NOT BE ENCLOSED UNLESS WITH THE APPROVED BALCONY SCREEN.



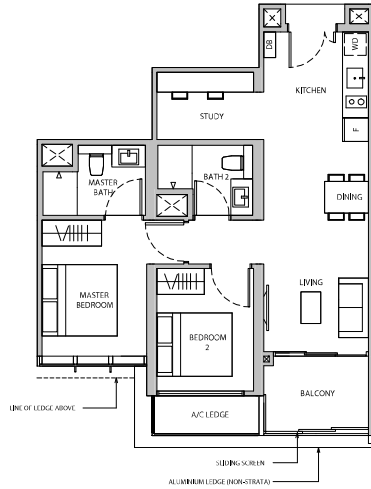


## 2-BEDROOM + STUDY

## 3-BEDROOM

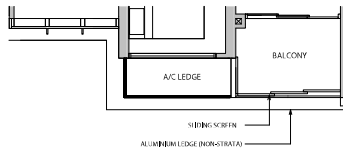
### TYPE 2C1 71 sq m / 764 sq ft

BLK 6	BLK 8	
#02-11	#02-24	#02-26*
#04-11	#04-24	#04-26*
#06-11	#06-24	#06-26*
#08-11	#08-24	#08-26*
#10-11	#10-24	#10-26*
#12-11	#12-24	#12-26*
#14-11	#14-24	#14-26*



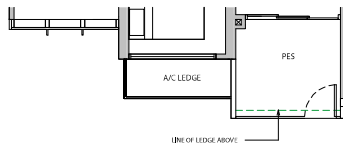
### TYPE 2C1 71 sq m / 764 sq ft

BLK 6	BLK 8	
#03-11	#03-24	#03-26*
#05-11	#05-24	#05-26*
#07-11	#07-24	#07-26*
#09-11	#09-24	#09-26*
#11-11	#11-24	#11-26*
#13-11	#13-24	#13-26*



### TYPE 2C1-G 72 sq m / 775 sq ft

BLK 6	BLK 8	
#01-11	#01-24	#01-26*



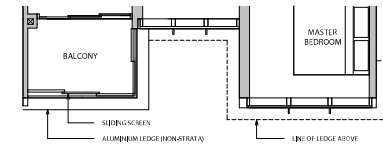
### TYPE 3A1 87 sq m / 936 sq ft

BLK 6	BLK 8	
#04-05*	#04-06	#04-18*
#06-05*	#06-06	#06-18*
#08-05*	#08-06	#08-18*
#10-05*	#10-06	#10-18*
#12-05*	#12-06	#12-18*
#14-05*	#14-06	#14-18*



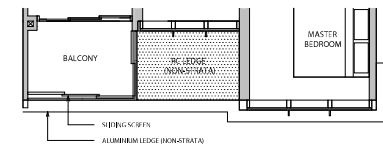
### TYPE 3A1 87 sq m / 936 sq ft

BLK 6	BLK 8	
#03-05*	#03-06	#03-18*
#05-05*	#05-06	#05-18*
#07-05*	#07-06	#07-18*
#09-05*	#09-06	#09-18*
#11-05*	#11-06	#11-18*
#13-05*	#13-06	#13-18*
#15-05*	#15-06	#15-18*



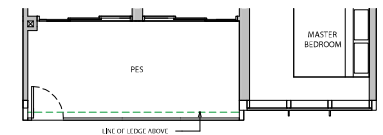
### TYPE 3A1 87 sq m / 936 sq ft

BLK 6	BLK 8	
#02-05*	#02-06	#02-18*
#04-05*	#04-06	#04-18*
#06-05*	#06-06	#06-18*
#08-05*	#08-06	#08-18*
#10-05*	#10-06	#10-18*
#12-05*	#12-06	#12-18*
#14-05*	#14-06	#14-18*



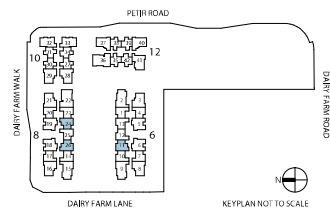
### TYPE 3A1-G 94 sq m / 1012 sq ft

BLK 6	BLK 8	
#01-05*	#01-06	#01-18*
#03-05*	#03-06	#03-18*
#05-05*	#05-06	#05-18*
#07-05*	#07-06	#07-18*
#09-05*	#09-06	#09-18*
#11-05*	#11-06	#11-18*
#13-05*	#13-06	#13-18*
#15-05*	#15-06	#15-18*



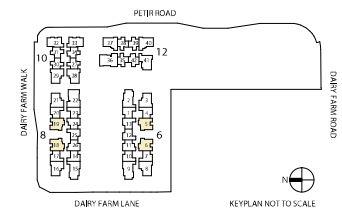
\*TERRACE UNITS  
DB DISTRIBUTION BOARD WD WASHER CUM DRYER W&D WASHER AND DRYER F FRIDGE DW DISHWASHER  
WC WATER CLOSET

AREA INCLUDES ALCOVE (A/C) LEDGE, BALCONY, PRIVATE ENCLOSED SPACE (PES) AND VOID WHERE APPLICABLE. PLEASE REFER TO THE KEYPLAN FOR ORIENTATION. THE PLANS ARE SUBJECTED TO CHANGE AS MAY BE APPROVED BY RELEVANT AUTHORITIES. ALL FLOOR PLANS ARE APPROXIMATE MEASUREMENTS ONLY AND ARE SUBJECTED TO GOVERNMENT RE-SURVEY. THE BALCONY SHALL NOT BE ENCLOSED UNLESS WITH THE APPROVED BALCONY SCREEN.



\*TERRACE UNITS  
DB DISTRIBUTION BOARD WD WASHER CUM DRYER W&D WASHER AND DRYER F FRIDGE DW DISHWASHER  
WC WATER CLOSET

AREA INCLUDES ALCOVE (A/C) LEDGE, BALCONY, PRIVATE ENCLOSED SPACE (PES) AND VOID WHERE APPLICABLE. PLEASE REFER TO THE KEYPLAN FOR ORIENTATION. THE PLANS ARE SUBJECTED TO CHANGE AS MAY BE APPROVED BY RELEVANT AUTHORITIES. ALL FLOOR PLANS ARE APPROXIMATE MEASUREMENTS ONLY AND ARE SUBJECTED TO GOVERNMENT RE-SURVEY. THE BALCONY SHALL NOT BE ENCLOSED UNLESS WITH THE APPROVED BALCONY SCREEN.



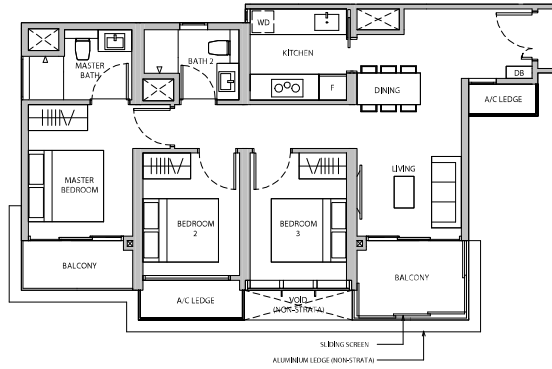


## 3-BEDROOM

## 3-BEDROOM

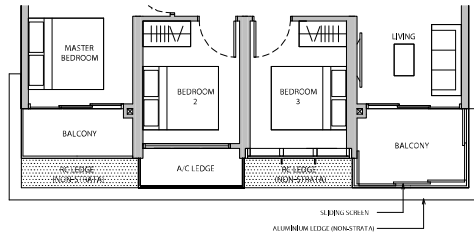
### TYPE 3A2 85 sq m / 915 sq ft

BLK 10  
#03-32\* to #05-32\*  
#03-33 to #05-33



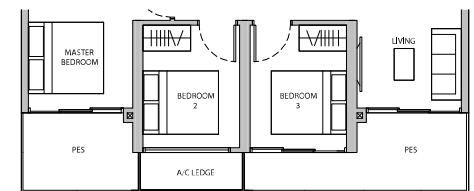
### TYPE 3A2 85 sq m / 915 sq ft

BLK 10  
#02-32\*  
#02-33



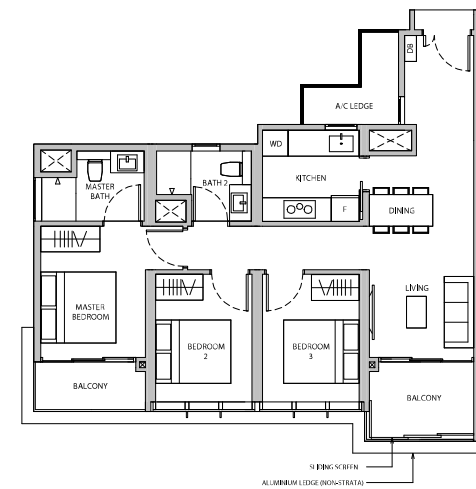
### TYPE 3A2-G 89 sq m / 958 sq ft

BLK 10  
#01-32\*  
#01-33



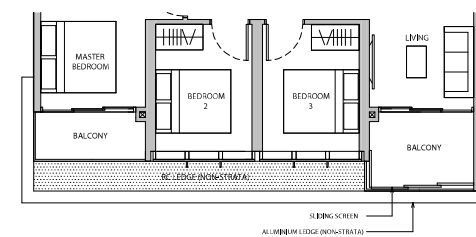
### TYPE 3A3 87 sq m / 936 sq ft

BLK 12  
#03-37\* to #05-37\*  
#03-40 to #05-40



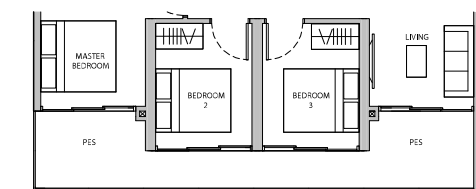
### TYPE 3A3 87 sq m / 936 sq ft

BLK 12  
#02-37\*  
#02-40



### TYPE 3A3-G 93 sq m / 1001 sq ft

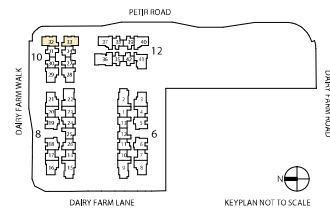
BLK 12  
#01-37\*  
#01-40



\*TERRACE UNITS

DB DISTRIBUTION BOARD WD WASHER CUM DRYER W&D WASHER AND DRYER F FRIDGE DW DISHWASHER  
WC WATER CLOSET

AREA INCLUDES ALCOVE (A/C) LEDGE, BALCONY, PRIVATE ENCLOSED SPACE (PES) AND VOID WHERE APPLICABLE, PLEASE REFER TO THE KEYPLAN FOR ORIENTATION. THE PLANS ARE SUBJECT TO CHANGE AS MAY BE APPROVED BY RELEVANT AUTHORITIES. ALL FLOOR PLANS ARE APPROXIMATE MEASUREMENTS ONLY AND ARE SUBJECT TO GOVERNMENT RE-SURVEY. THE BALCONY SHALL NOT BE ENCLOSED UNLESS WITH THE APPROVED BALCONY SCREEN.

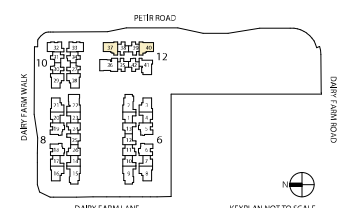


KEYPLAN NOT TO SCALE

\*TERRACE UNITS

DB DISTRIBUTION BOARD WD WASHER CUM DRYER W&D WASHER AND DRYER F FRIDGE DW DISHWASHER  
WC WATER CLOSET

AREA INCLUDES ALCOVE (A/C) LEDGE, BALCONY, PRIVATE ENCLOSED SPACE (PES) AND VOID WHERE APPLICABLE, PLEASE REFER TO THE KEYPLAN FOR ORIENTATION. THE PLANS ARE SUBJECT TO CHANGE AS MAY BE APPROVED BY RELEVANT KEYPLAN AUTHORITIES. ALL FLOOR PLANS ARE APPROXIMATE MEASUREMENTS ONLY AND ARE SUBJECT TO GOVERNMENT RE-SURVEY. THE BALCONY SHALL NOT BE ENCLOSED UNLESS WITH THE APPROVED BALCONY SCREEN.



KEYPLAN NOT TO SCALE

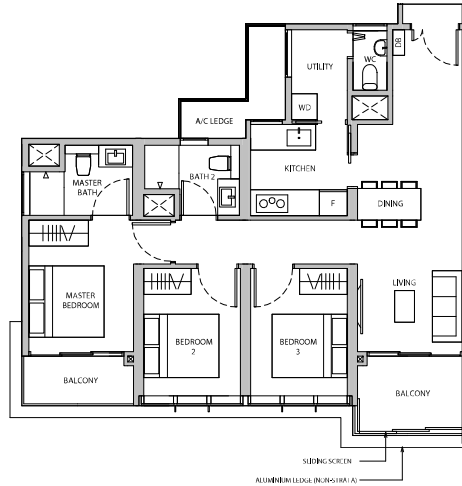


# 3 - BEDROOM

# 3 - BEDROOM

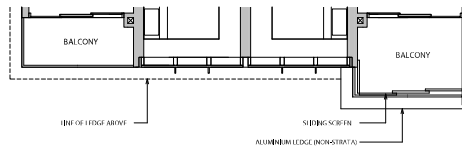
## TYPE 3B1 94 sq m / 1012 sq ft

**BLK 6**  
#04-03\* #04-08 #04-16\* #04-21  
#06-03\* #06-08 #06-16\* #06-21  
#08-03\* #08-08 #08-16\* #08-21  
#10-03\* #10-08 #10-16\* #10-21  
#12-03\* #12-08 #12-16\* #12-21  
#14-03\* #14-08 #14-16\* #14-21



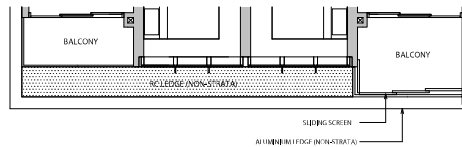
## TYPE 3B1 94 sq m / 1012 sq ft

**BLK 6**  
#03-03\* #03-08 #03-16\* #03-21  
#05-03\* #05-08 #05-16\* #05-21  
#07-03\* #07-08 #07-16\* #07-21  
#09-03\* #09-08 #09-16\* #09-21  
#11-03\* #11-08 #11-16\* #11-21  
#13-03\* #13-08 #13-16\* #13-21  
#15-03\* #15-08 #15-16\* #15-21



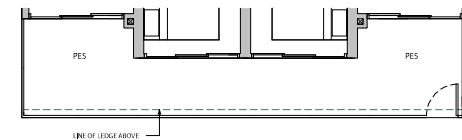
## TYPE 3B1 94 sq m / 1012 sq ft

**BLK 6**  
#02-03\* #02-08 #02-16\* #02-21

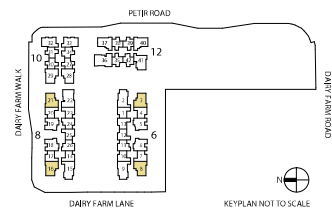


## TYPE 3B1-G 105 sq m / 1130 sq ft

**BLK 6**  
#01-03\* #01-08 #01-16\* #01-21

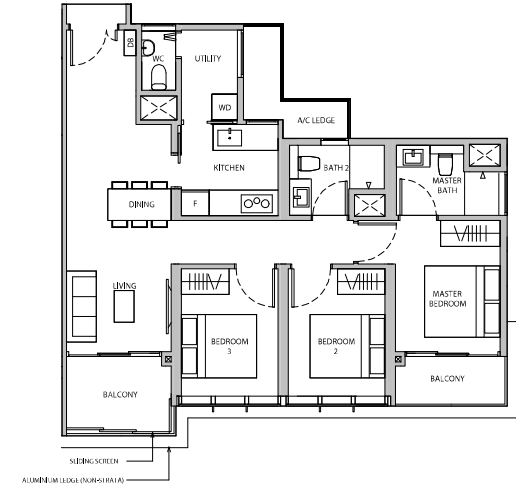


\*TERRACE UNITS  
DB DISTRIBUTION BOARD WD WASHER DRYER W&D WASHER AND DRYER F FRIDGE DW DISHWASHER  
WC WATER CLOSET  
AREA INCLUDES ALCO (A/C) LEDGE, BALCONY, PRIVATE ENCLOSED SPACE (PES) AND VOID WHERE APPLICABLE. PLEASE REFER TO THE KEYPLAN FOR ORIENTATION. THE PLANS ARE SUBJECT TO CHANGE AS MAY BE APPROVED BY RELEVANT AUTHORITIES. ALL FLOOR PLANS ARE APPROXIMATE MEASUREMENTS ONLY AND ARE SUBJECT TO GOVERNMENT RE-SURVEY. THE BALCONY SHALL NOT BE ENCLOSED UNLESS WITH THE APPROVED BALCONY SCREEN.



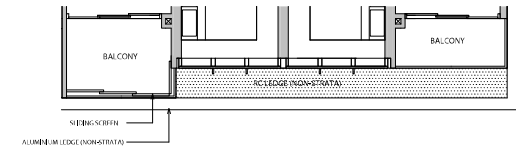
## TYPE 3B1a 93 sq m / 1001 sq ft

**BLK 10**  
#03-28\* #03-29 #04-28\* #04-29  
#05-28\* #05-29



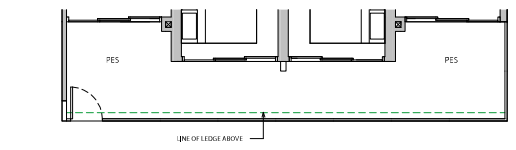
## TYPE 3B1a 93 sq m / 1001 sq ft

**BLK 10**  
#02-28\* #02-29

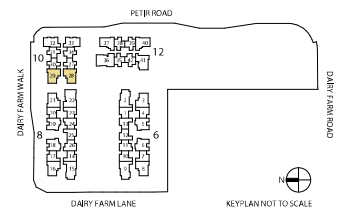


## TYPE 3B1a-G 105 sq m / 1130 sq ft

**BLK 10**  
#01-28\* #01-29



\*TERRACE UNITS  
DB DISTRIBUTION BOARD WD WASHER DRYER W&D WASHER AND DRYER F FRIDGE DW DISHWASHER  
WC WATER CLOSET  
AREA INCLUDES ALCO (A/C) LEDGE, BALCONY, PRIVATE ENCLOSED SPACE (PES) AND VOID WHERE APPLICABLE. PLEASE REFER TO THE KEYPLAN FOR ORIENTATION. THE PLANS ARE SUBJECT TO CHANGE AS MAY BE APPROVED BY RELEVANT AUTHORITIES. ALL FLOOR PLANS ARE APPROXIMATE MEASUREMENTS ONLY AND ARE SUBJECT TO GOVERNMENT RE-SURVEY. THE BALCONY SHALL NOT BE ENCLOSED UNLESS WITH THE APPROVED BALCONY SCREEN.





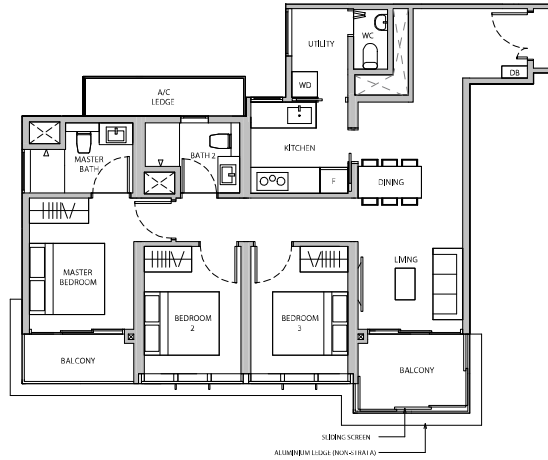
# 3-BEDROOM

# 3-BEDROOM

## TYPE 3B2

95 sq m / 1023 sq ft

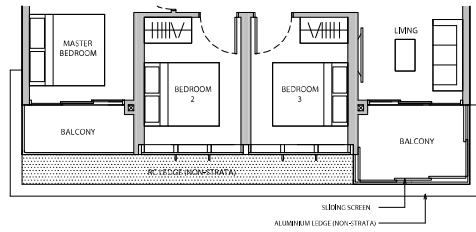
BLK 12  
#03-41 to #05-41



## TYPE 3B2

95 sq m / 1023 sq ft

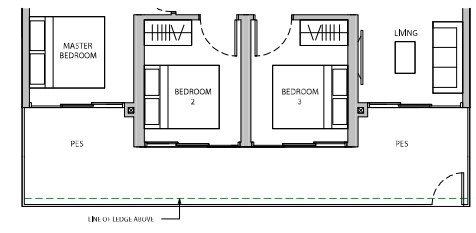
BLK 12  
#02-41



## TYPE 3B2-G

107 sq m / 1152 sq ft

BLK 12  
#01-41

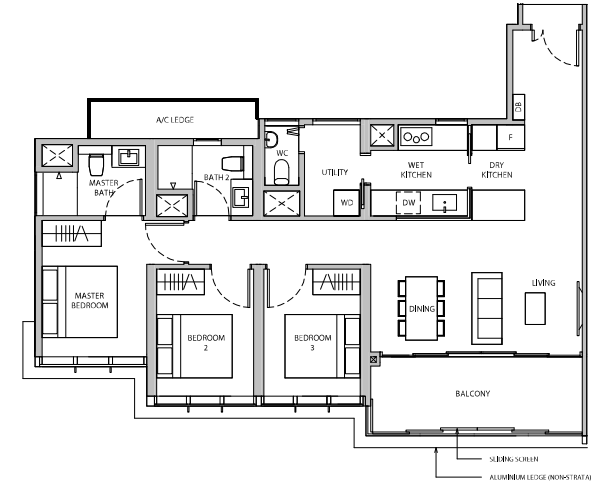


## TYPE 3C1

106 sq m / 1141 sq ft

BLK 6  
#04-02  
#06-02  
#08-02  
#10-02  
#12-02  
#14-02

BLK 8  
#04-15  
#06-15  
#08-15  
#10-15  
#12-15  
#14-15

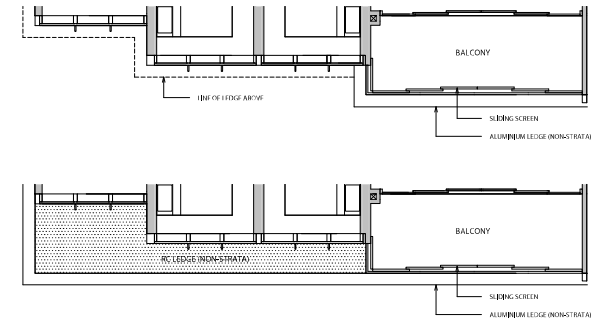


## TYPE 3C1

106 sq m / 1141 sq ft

BLK 6  
#03-02  
#05-02  
#07-02  
#09-02  
#11-02  
#13-02  
#15-02

BLK 8  
#03-15  
#05-15  
#07-15  
#09-15  
#11-15  
#13-15  
#15-15

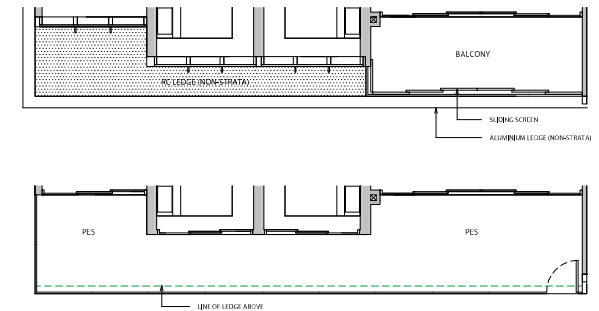


## TYPE 3C1

106 sq m / 1141 sq ft

BLK 6  
#02-02  
#02-09

BLK 8  
#02-15

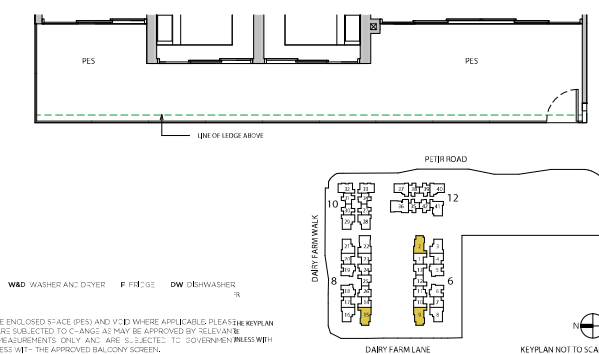


## TYPE 3C1-G

122 sq m / 1313 sq ft

BLK 6  
#01-02  
#01-09

BLK 8  
#01-15



THICKER LINES  
DB DISTRIBUTION BOARD  
WC WATER CLOS  
WD WASHER CUM DRYER  
W&D WASHER AND DRYER  
F FRIDGE  
DW DISHWASHER

AREA INCLUDES AIR-CON (A/C) LEDGE, BALCONY, PRIVATE ENCLOSED SPACE (PES) AND VOID WHERE APPLICABLE. PLEASE REFER TO THE KEYPLAN FOR ORIENTATION. THE PLANS ARE SUBJECT TO CHANGE AS MAY BE APPROVED BY RELEVANT AUTHORITIES. ALL FLOOR PLANS ARE APPROXIMATE MEASUREMENTS ONLY AND ARE SUBJECT TO GOVERNMENT RE-SURVEY. THE BALCONY SHALL NOT BE ENCLOSED UNLESS WITH THE APPROVED BALCONY SCREEN.

THICKER LINES  
DB DISTRIBUTION BOARD  
WC WATER CLOS  
WD WASHER CUM DRYER  
W&D WASHER AND DRYER  
F FRIDGE  
DW DISHWASHER

AREA INCLUDES AIR-CON (A/C) LEDGE, BALCONY, PRIVATE ENCLOSED SPACE (PES) AND VOID WHERE APPLICABLE. PLEASE REFER TO THE KEYPLAN FOR ORIENTATION. THE PLANS ARE SUBJECT TO CHANGE AS MAY BE APPROVED BY RELEVANT AUTHORITIES. ALL FLOOR PLANS ARE APPROXIMATE MEASUREMENTS ONLY AND ARE SUBJECT TO GOVERNMENT RE-SURVEY. THE BALCONY SHALL NOT BE ENCLOSED UNLESS WITH THE APPROVED BALCONY SCREEN.

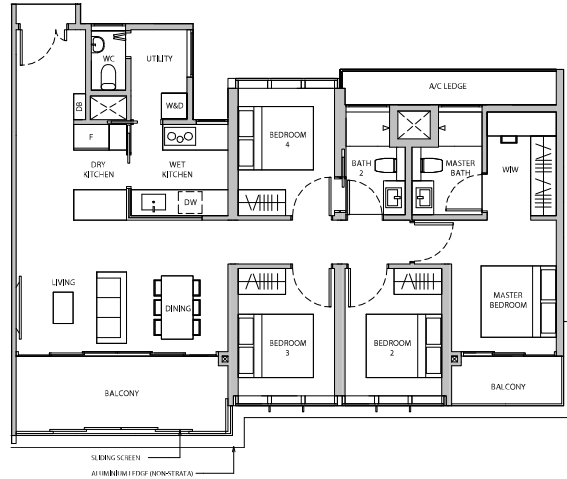


# 4 - BEDROOM

# 4 - BEDROOM

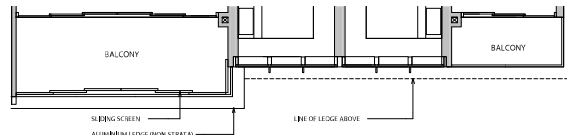
## TYPE 4A1 124 sq m / 1335 sq ft

BLK 8  
#04-22  
#06-22  
#08-22  
#10-22  
#12-22  
#14-22



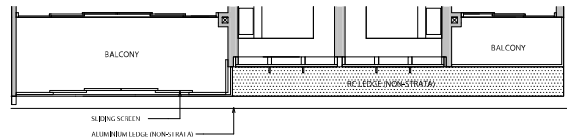
## TYPE 4A1 124 sq m / 1335 sq ft

BLK 8  
#03-22  
#05-22  
#07-22  
#09-22  
#11-22  
#13-22  
#15-22



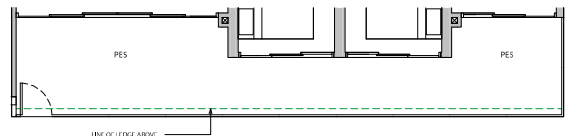
## TYPE 4A1 124 sq m / 1335 sq ft

BLK 8  
#02-22

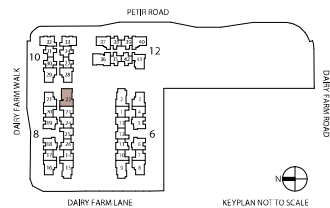


## TYPE 4A1-G 137 sq m / 1475 sq ft

BLK 8  
#01-22

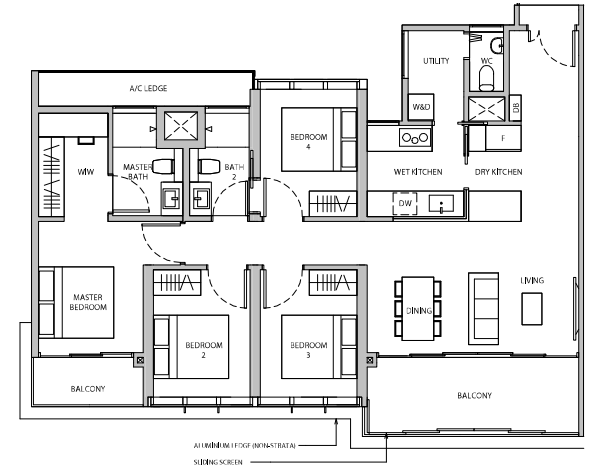


TERMINAL UNITS  
DB DISTRIBUTION BOARD WD WASHER CUM DRYER W&D WASHER AND DRYER F Fridge DW Dishwasher  
WC WATER CLOSET WW WALK-IN WARDROBE  
AREA INCLUDES ALCON (A/C) LEDGE, BALCONY, PRIVATE ENCLOSED SPACE (PES) AND VOID WHERE APPLICABLE. PLEASE REFER TO THE KEYPLAN FOR ORIENTATION. THE PLANS ARE SUBJECT TO CHANGE AS MAY BE APPROVED BY RELEVANT AUTHORITIES. ALL FLOOR PLANS ARE APPROXIMATE MEASUREMENTS ONLY AND ARE SUBJECT TO GOVERNMENT RE-SURVEY. THE BALCONY SHALL NOT BE ENCLOSED UNLESS WITH THE APPROVED BALCONY SCREEN.



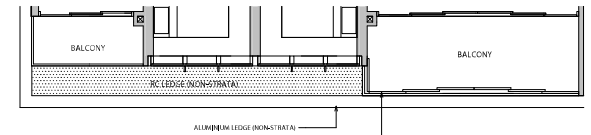
## TYPE 4A1a 123 sq m / 1324 sq ft

BLK 12  
#03-36  
#04-36  
#05-36



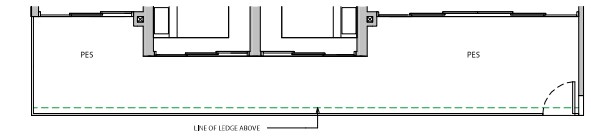
## TYPE 4A1a 123 sq m / 1324 sq ft

BLK 12  
#02-36



## TYPE 4A1a-G 137 sq m / 1475 sq ft

BLK 12  
#01-36



TERMINAL UNITS  
DB DISTRIBUTION BOARD WD WASHER CUM DRYER W&D WASHER AND DRYER F Fridge DW Dishwasher  
WC WATER CLOSET WW WALK-IN WARDROBE  
AREA INCLUDES ALCON (A/C) LEDGE, BALCONY, PRIVATE ENCLOSED SPACE (PES) AND VOID WHERE APPLICABLE. PLEASE REFER TO THE KEYPLAN FOR ORIENTATION. THE PLANS ARE SUBJECT TO CHANGE AS MAY BE APPROVED BY RELEVANT AUTHORITIES. ALL FLOOR PLANS ARE APPROXIMATE MEASUREMENTS ONLY AND ARE SUBJECT TO GOVERNMENT RE-SURVEY. THE BALCONY SHALL NOT BE ENCLOSED UNLESS WITH THE APPROVED BALCONY SCREEN.

